



**komfovent**  
kompakt

**NEW!**

## KOMFOVENT KOMPAKT RECU-700HECF-EC-C3

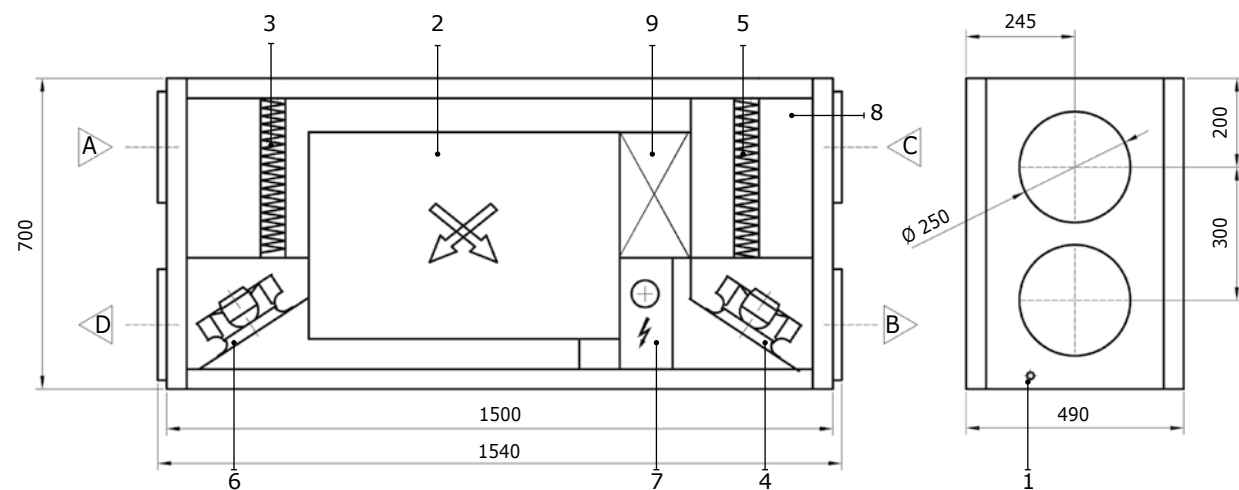
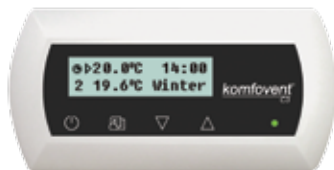
KOMFOVENT KOMPAKT RECU 700HECF-EC-C3 – with a high-efficient plate heat exchanger and electronically commutated motors EC.  
**Air volume is up to 800 m<sup>3</sup>/h.**

### Exclusive advantages:

- Energy efficiency – 92%.
- Energy efficient motors EC.
- Extremely quiet unit operation.

Unit is developed and designed to create mechanical ventilation and heat recovery in flats, apartments or other residential premise up to 300 m<sup>2</sup>. High-efficient plate heat exchangers and EC motors guarantee the most effective and economical unit operation: up to 92% of energy required for supplied air heating is recovered and used from the exhausted air.

Unit is produced with a fully integrated automatic control C3 with the wall mounted panel which is handy and simple in use and ensures the most economical unit functioning and necessary control.



### Design:

- 1 Drainage
- 2 Plate heat exchanger
- 3 Supply air filter
- 4 Supply fan

- 5 Exhaust air filter
- 6 Exhaust fan
- 7 Electric air heater
- 8 Automation control system
- 9 By-pass damper

- A Outdoor intake
- B Supply air
- C Extract indoor
- D Exhaust air



**komfovent**  
kompakt

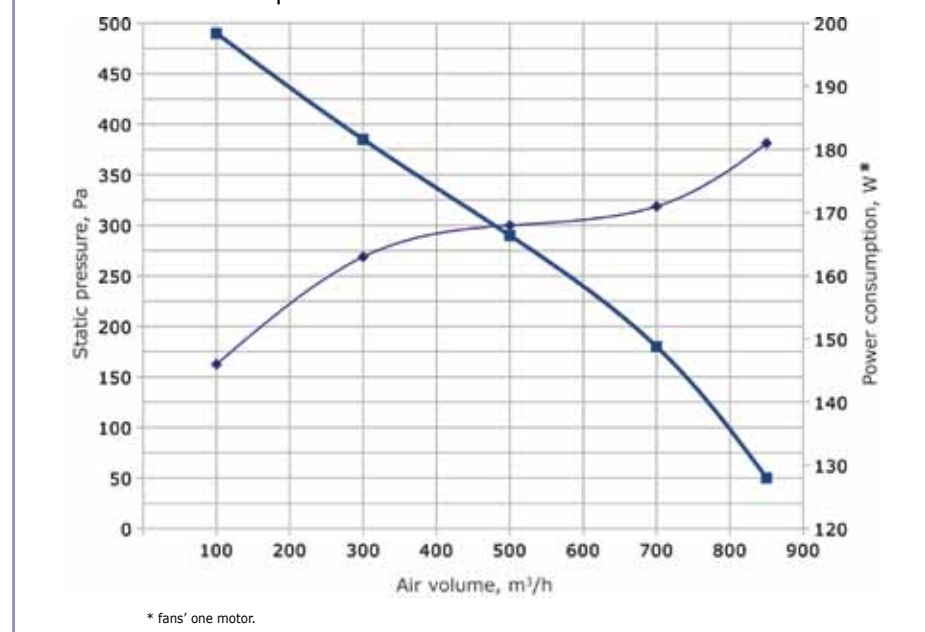
### Construction features:

- High performance of high efficiency plate heat exchanger from plastic – fully separated air flows, by-pass.
- F5 class air filters.
- Painted in RAL 7035.

### Performance features:

- Fully integrated automatic control with a wall mounted control panel(touch screen).
- User-friendly, easy and convenient unit's control.
- Individual control of ventilation intensity.
- Choice of economical mode operation: summer/winter.
- Summer by-pass operation.

RECU-700HECF-EC performance



Technical data		RECU-700HECF-EC-C3	
		E	W
Supply voltage	V/Hz	~230/50/1 phase	
Maximal operating current	A	11.5	3.6
Fan power	W	2 x 165	
Heater capacity	kW	2	4.5
Thermal efficiency of plate heat exchanger up to	%	~92	
Energy recovery of plate heat exchanger	kW	~6.3	
Unit dimensions (BxHxL)	mm	485 x 700 x 1500	
Ductwork connection	mm	Ø 250	
Supply air filter/ Exhaust air filter	mm	390 x 300 x 46 - F5	
Unit weight	kg	100	
Unit color		RAL 7035	